

## CERTAIN 2010 – 2012 FUSION AND 2010 – 2011 MILAN VEHICLES – PASSENGER AIRBAG MODULE REPLACEMENT

### OVERVIEW

Takata have determined that the propellant in certain Takata airbag inflators can experience an alteration over time with exposure to certain climate conditions. A combination of time, high temperature fluctuations, and humidity contribute to the degradation of the propellant in the inflators. This degradation can cause the propellant to burn too quickly, creating high pressure inside the inflator, and in extreme cases causing the inflator to rupture in the event of a crash necessitating airbag deployment. A ruptured inflator can send inflator parts toward vehicle occupants resulting in serious injury or death.

Dealers are to replace the passenger airbag module. The serial number from the new airbag module must be recorded on the repair order. If the serial number is not readable, a new module must be obtained. Place the replaced airbag module into the packaging from the new part and provide to the appropriate dealership personnel for part returns.

### SERVICE PROCEDURE

**NOTE:** The following repair instructions only apply to 2010 – 2012 Fusion and 2010 – 2011 Milan vehicles. Repair instructions are published in separate attachments for the other vehicle lines included in this recall.

**IMPORTANT:** The parts used in this safety recall may physically appear to be identical, but they have differing operating characteristics. **It is crucial that parts are NOT interchanged or substituted. Do not disassemble, modify, or alter the parts or repair procedure in any way.** Doing so may prevent the airbag from operating properly during a deployment.



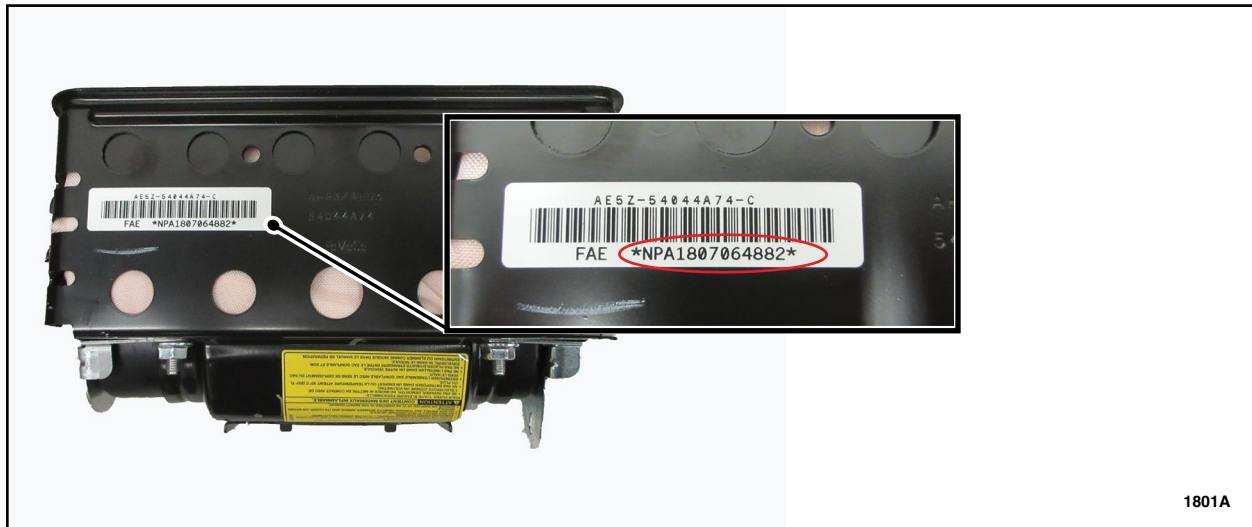
**WARNING:** Failure to follow the instructions and warnings in the Workshop Manual (WSM) may result in injury.

**NOTE:** If the Airbag Readiness light indicates no Supplemental Restraint System (SRS) faults are present, it is not necessary to follow the WSM SRS Depowering and Repowering steps. Turn the ignition to OFF and wait 1 minute, then it is safe to proceed with airbag inflator replacement.

**NOTE:** The ignition must remain OFF until this service procedure is completed.



1. Record the 13 character serial number of the new airbag module on the repair order. See Figure 1.




**FIGURE 1**

**NOTE:** Reduce the risk of damaging interior components by allowing the interior of the vehicle to reach a warm inside temperature.

2. Remove the left hand and right hand A-Pillar trim panels. Reuse the LH and RH trim panels for this repair. See Figure 2.

- Grasp the trim panel approximately 5 inches from the top and pull downward toward the door, then rotate the panel inward toward the windshield to slide it off of the a-pillar clip.

**NOTE:** Do not bend or flex the trim panels during removal to avoid stress marks from occurring.

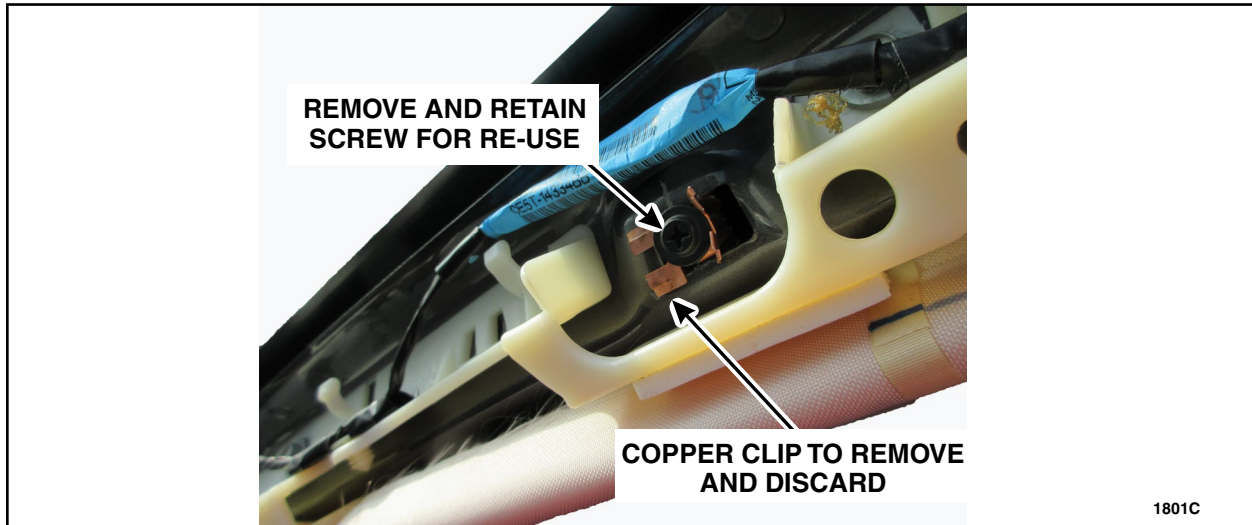
**NOTE:** To view a video demonstration of this repair procedure, click the video icon. 



**FIGURE 2**



3. Remove and discard the top A-Pillar clip from the body. See Figure 3.

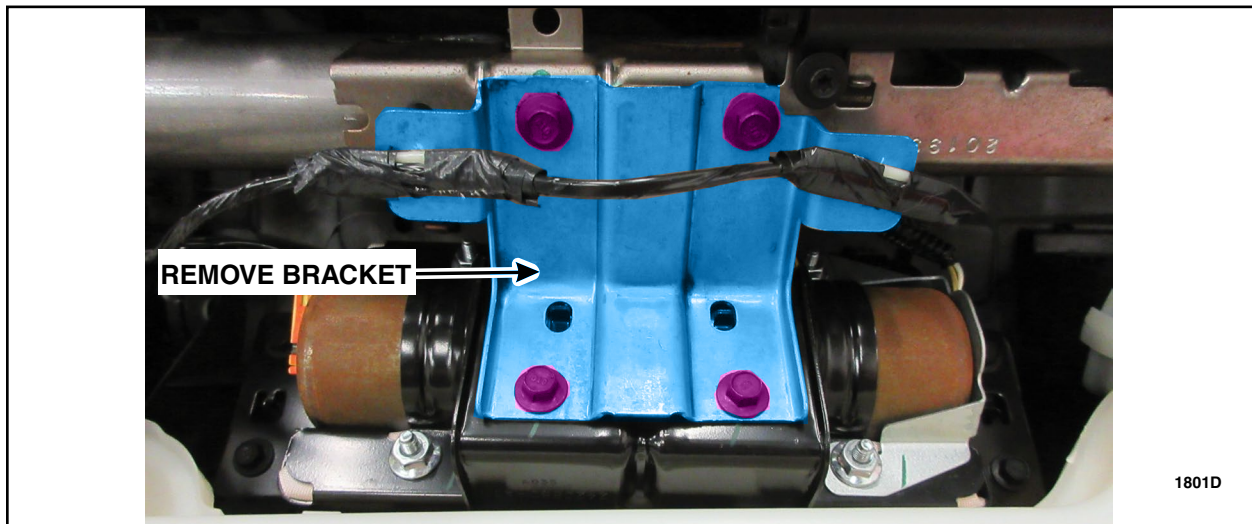


**FIGURE 3**

4. Remove the passenger airbag module. Please refer to Workshop Manual (WSM) procedures in section 501-20B.

**NOTE:** Remove the instrument panel with care, prevent damage by covering any interior components that may scrape or hit the instrument panel upon removal. Once removed gently place the instrument panel onto a clean surface.

- Remove the instrument panel crossmember-to-airbag module bracket. See Figure 4.
- Torque to 80 lb. in (9 Nm).



**FIGURE 4**



5. Remove the six nuts retaining the airbag module bracket to the instrument panel. Remove the bracket from the instrument panel. See Figure 5.

- Torque to 80 lb.in (9 Nm).

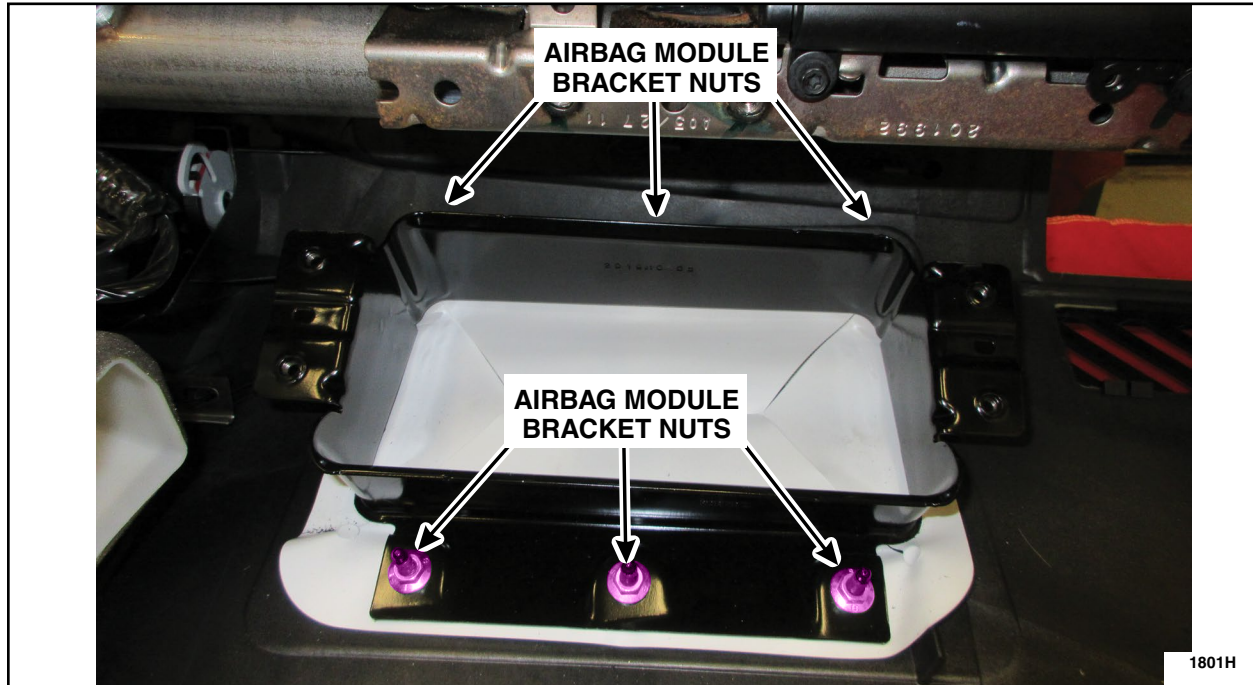


FIGURE 5



6. Inspect the white airbag cushion sheet installed on the instrument panel and the new airbag cushion sheet included with the new airbag module. See Figure 6.

**NOTE:** If any damage is present on the existing or new airbag cushion sheet it must be replaced. Type of damage includes, but is not limited to, cuts, creases, folds, or the perforations being broken.

**NOTE:** Sheets can be installed in any direction or orientation.

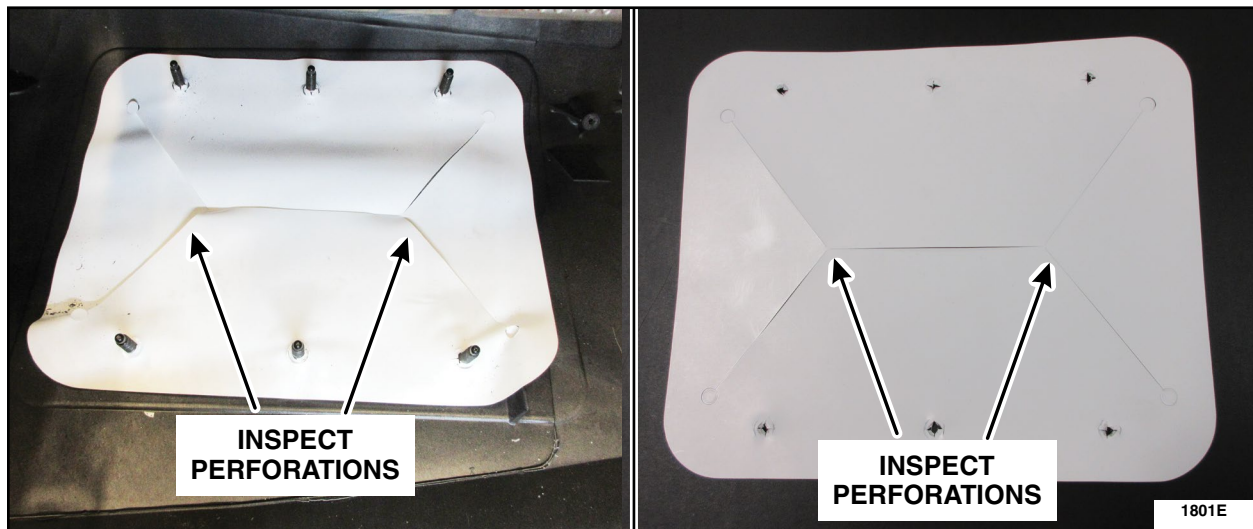
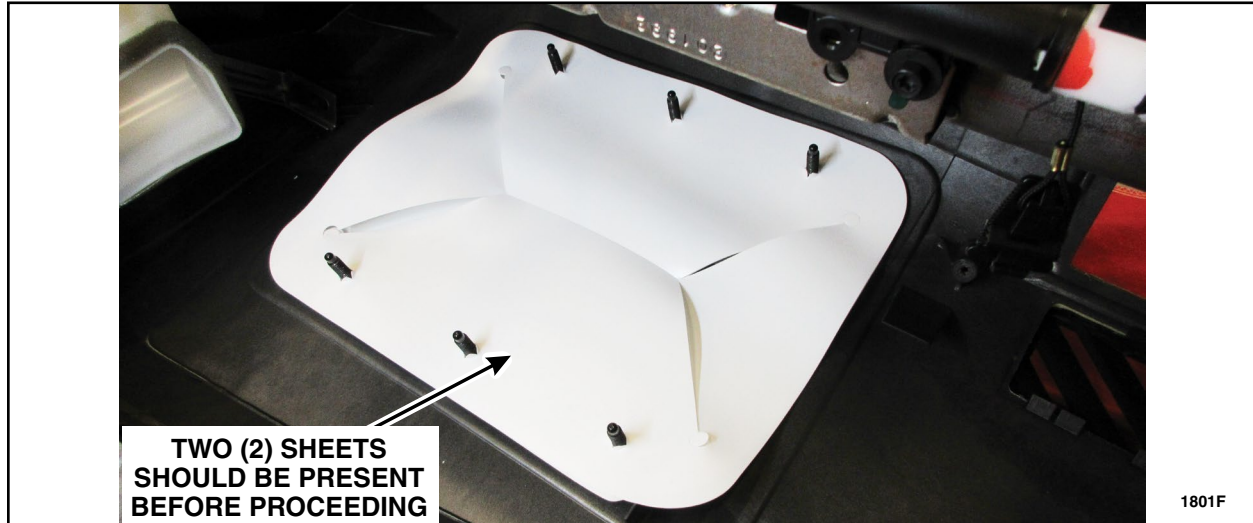


FIGURE 6



7. Replace sheet or sheets if damaged, clear both sheets of any dirt or debris and **install both sheets** on the airbag mounting bracket studs. See Figure 7.

**NOTE:** The sheets will not lay perfectly flat when installed on the instrument panel.



**FIGURE 7**

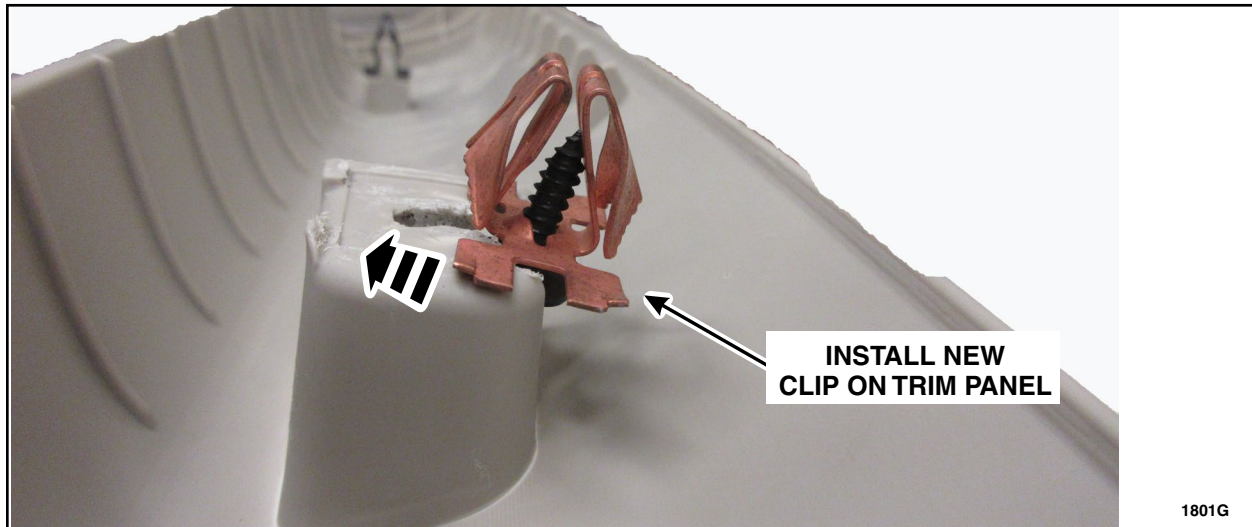
8. Reinstall the airbag module bracket onto the instrument panel. See Figure 5.
9. Install the new airbag module and instrument panel. Please follow WSM procedures in section 501-20B.
  - Install the instrument panel crossmember-to-airbag module bracket. See Figure 4.



10. Install the new A-Pillar trim panel clip onto the trim panel. See Figure 7.

**NOTE:** If the new A-Pillar trim panel clips are not equipped with a screw installed, re-use the screw from the original clip from step 3. Install the screw into the new clip by hand.

- Torque to 9 lb.in (1 Nm).



**FIGURE 7**

11. Install the LH and RH A-Pillar trim panels by aligning the attachment clips to the holes and snapping the new trim panel in place.
12. Package the replaced airbag module in the new part box and provide to the appropriate dealership personnel for part returns.

